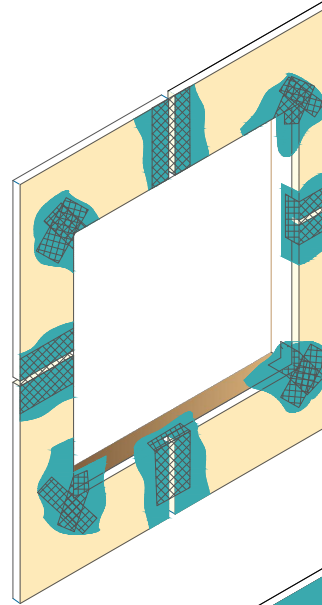
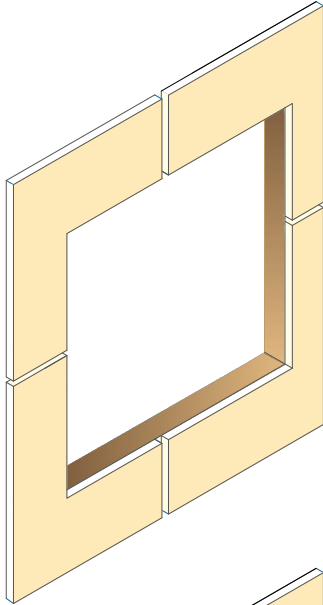




15262 Capitol Port  
San Antonio, TX 78249  
1-833-899-0787  
facadesxi.com

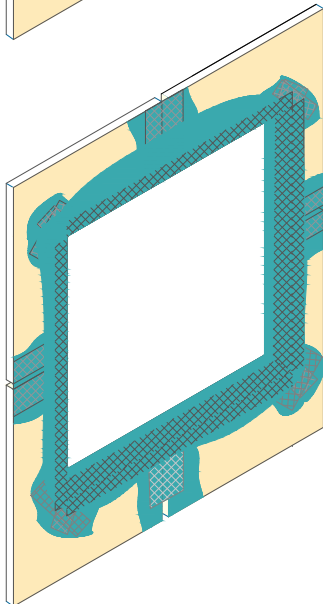
# Xi-WaterShield Assembly Rough Opening Protection

Date: 06-15-2021  
Detail.WSA.II.1v1



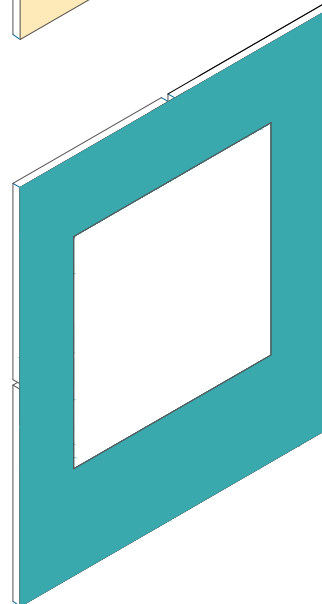
## STEP 1

At all corners and sheathing joints, embed WaterShield Joint Mesh into wet Xi-WaterShield



## STEP 2

1. Apply Xi-WaterShield into entire depth of the rough opening and onto the face of the sheathing a min of 2 inches.
2. Embed WaterShield Joint Mesh centered over the corner edge.
3. Allow to dry.



## STEP 3

Coat entire wall with Xi-WaterShield

## NOTES:

1. Rough Opening may also be treated with Xi-FlashFill or WaterShield SAF Membrane.

**DISCLAIMER:** FACADESXI details are recommendations that should be used for guidance only. There may be equivalent means of installation that are not shown in FACADESXI assembly details. All FACADESXI products shall be installed in accordance with FACADESXI product datasheets and all applicable building codes and industry standard practices. The design, engineering and final details incorporating any FACADESXI product are the sole responsibility of the project design professional. FACADESXI is not responsible for determining the acceptability and/or applicability of any FACADESXI product or detail for any specific project or condition. FACADESXI disclaims all liability for improper installation, workmanship, or design by a third-party. EXCEPT FOR ANY EXPRESS REPRESENTATIONS AND WARRANTIES BY FACADESXI, ALL IMPLIED WARRANTIES OF ANY KIND, INCLUDING BUT NOT LIMITED TO WARRANTIES OF MERCHANTABILITY OR FITNESS FOR A PARTICULAR PURPOSE OR COMPLIANCE WITH LAWS OR GOVERNMENT RULES OR REGULATIONS APPLICABLE TO THE PROJECT, ARE HEREBY DISCLAIMED. FACADESXI's website should always be consulted for the latest version of any details and/or product information. Contact FACADESXI for any technical assistance.